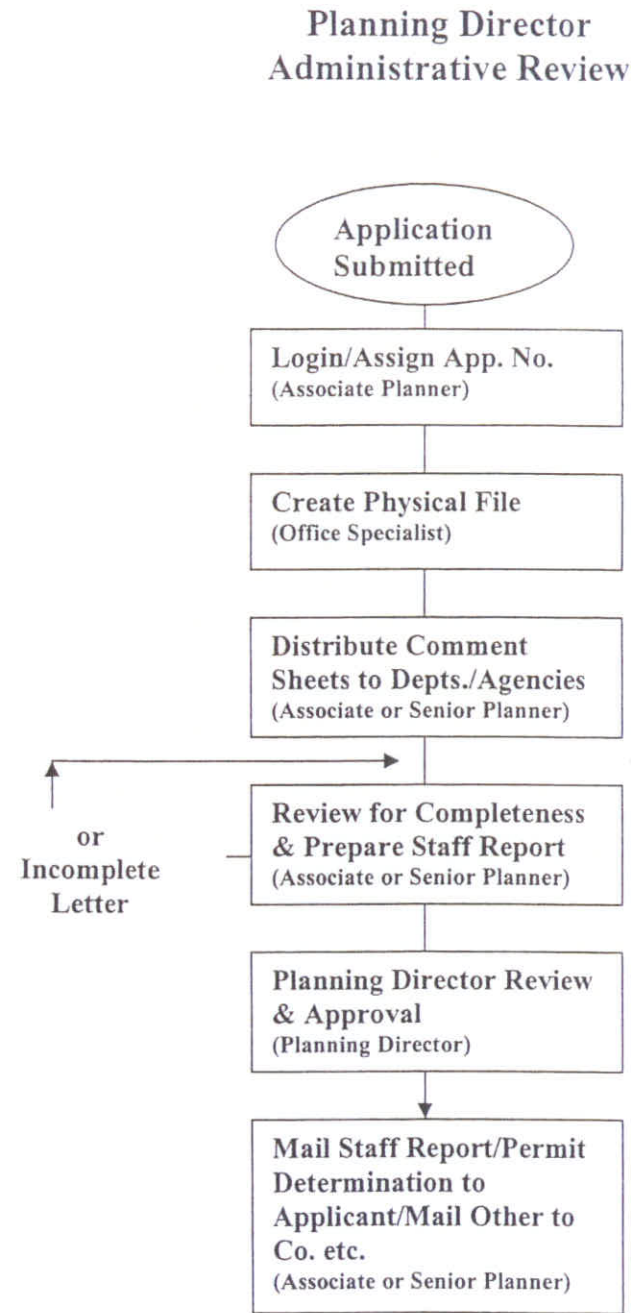
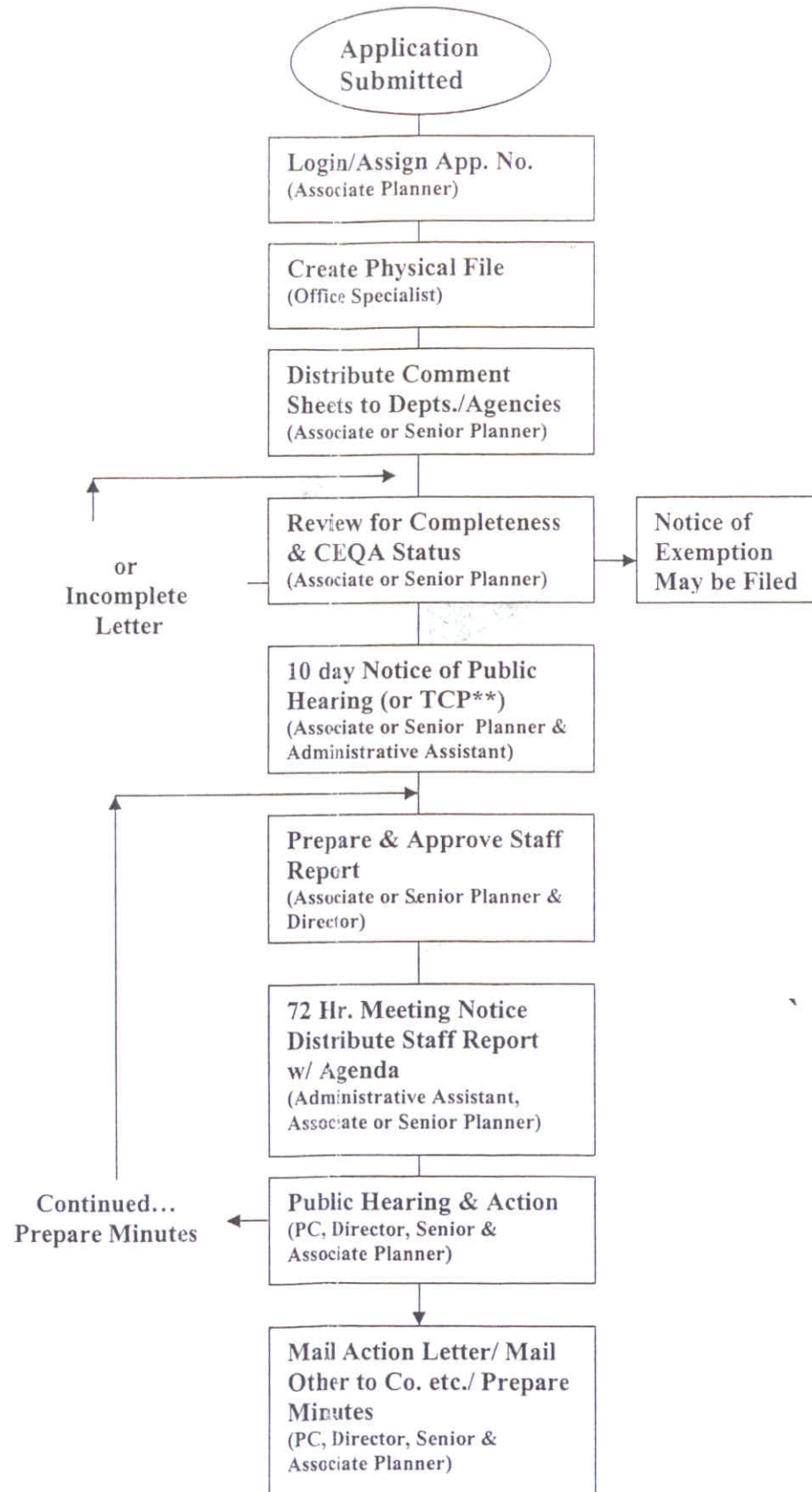


2011 Planning Department (Time-in-Motion) Fee Study		Planning Director	Senior Planner	Associate Planner	Admin. Assistant	Office Specialist	Public Works	CSG	Planning Comm.	City Attorney	Total Staff Time / Permit	Planning Director	Senior Planner	Associate Planner	Admin. Assistant	Office Specialist	Public Works	CSG	City Attorney	Planning Comm.	Gen. Plan Update	Dept. Costs (\$/76/min)	Total Cost to Issue Permit	2009 Permit Fee	% Costs Recovered	Proposed 2012-13 Fee	% Costs Recovered	% Change	
												\$2.28	\$1.76	\$1.35	\$1.08	\$0.32	\$2.30	\$1.42	\$1.36	\$0.42	10%								
	<b>USE PERMITS</b>																												
P1	Conditional uses listed in District Regulations not listed below	47	238	52	50	6	30	30	33	0	486	\$107.36	\$419.40	\$70.44	\$54.23	\$1.90	\$69.00	\$42.50		\$13.86	\$77.87	\$298.68	\$1,155.23	\$287	25%	\$866	75%	202%	
P2	Secondary dwelling units	11	0	181	0	6	30	30	0	0	258	\$25.13		\$245.17		\$1.90	\$69.00	\$42.50		\$0.00	\$38.37	\$150.48	\$572.55	\$627	110%	\$573	100%	-9%	
P3a	Transfer of development rights within the R-BA district	131	725	32	90	6	30	30	33	55	1,132	\$299.22	\$1,277.59	\$43.34	\$97.61	\$1.90	\$69.00	\$42.50	\$74.54	\$13.86	\$191.96	\$747.84	\$2,859.38	\$671	23%	\$2,145	75%	220%	
P3b	Clustered development within the R-BA district	131	725	32	90	6	30	30	33	55	1,132	\$299.22	\$1,277.59	\$43.34	\$97.61	\$1.90	\$69.00	\$42.50	\$74.54	\$13.86	\$191.96	\$747.84	\$2,859.38			\$2,145	75%		
P4	Exceptions to Fence Regulations																												
	- Residential uses	42	188	52	50	6	30	30	33	0	431	\$95.93	\$331.29	\$70.44	\$54.23	\$1.90	\$69.00	\$42.50		\$13.86	\$67.92	\$256.88	\$1,003.95	\$268	27%	\$753	75%	181%	
	- Retaining walls	42	188	52	50	6	30	30	33	0	431	\$95.93	\$331.29	\$70.44	\$54.23	\$1.90	\$69.00	\$42.50		\$13.86	\$67.92	\$256.88	\$1,003.95	\$268	27%	\$753	75%	181%	
	- All other uses	42	188	52	50	6	30	30	33	0	431	\$95.93	\$331.29	\$70.44	\$54.23	\$1.90	\$69.00	\$42.50		\$13.86	\$67.92	\$256.88	\$1,003.95	\$1,077	107%	\$1,004	100%	-7%	
P5	Greenhouses on substandard lots	47	238	52	50	6	30	30	33	0	486	\$107.36	\$419.40	\$70.44	\$54.23	\$1.90	\$69.00	\$42.50		\$13.86	\$77.87	\$298.68	\$1,155.23	\$287	25%	\$866	75%	202%	
P6	Horses in any district	47	238	52	50	6	30	30	33	0	486	\$107.36	\$419.40	\$70.44	\$54.23	\$1.90	\$69.00	\$42.50		\$13.86	\$77.87	\$298.68	\$1,155.23	\$287	25%	\$866	75%	202%	
P7	Public buildings, schools, parks, churches:																												
	- New construction	47	238	52	50	6	30	30	33	0	486	\$107.36	\$419.40	\$70.44	\$54.23	\$1.90	\$69.00	\$42.50		\$13.86	\$77.87	\$298.68	\$1,155.23	\$2,698	234%	\$866	75%	-68%	
	- Use only	47	238	52	50	6	30	30	33	0	486	\$107.36	\$419.40	\$70.44	\$54.23	\$1.90	\$69.00	\$42.50		\$13.86	\$77.87	\$298.68	\$1,155.23	\$287	25%	\$866	75%	202%	
P8	Hospitals, etc.	47	238	52	50	6	30	30	33	0	486	\$107.36	\$419.40	\$70.44	\$54.23	\$1.90	\$69.00	\$42.50		\$13.86	\$77.87	\$298.68	\$1,155.23	\$2,698	234%	\$866	75%	-68%	
P9	Philanthropic or charitable institutions																												
	- New construction	47	238	52	50	6	30	30	33	0	486	\$107.36	\$419.40	\$70.44	\$54.23	\$1.90	\$69.00	\$42.50		\$13.86	\$77.87	\$298.68	\$1,155.23	\$2,698	234%	\$866	75%	-68%	
	- Use only	47	238	52	50	6	30	30	33	0	486	\$107.36	\$419.40	\$70.44	\$54.23	\$1.90	\$69.00	\$42.50		\$13.86	\$77.87	\$298.68	\$1,155.23	\$287	25%	\$866	75%	202%	
P10	Public utilities in all districts	47	238	52	50	6	30	30	33	0	486	\$107.36	\$419.40	\$70.44	\$54.23	\$1.90	\$69.00	\$42.50		\$13.86	\$77.87	\$298.68	\$1,155.23	\$2,698	234%	\$1,155	100%	-57%	
P11	Temporary uses of not more than 45 days duration - all districts	49	255	52	50	6	30	30	33	0	505	\$111.92	\$449.36	\$70.44	\$54.23	\$1.90	\$69.00	\$42.50		\$13.86	\$81.32	\$313.12	\$1,207.65	\$280	23%	\$906	75%	223%	
P12	Condominiums, cooperatives, new construction and conversion	44	210	52	50	6	30	30	33	60	515	\$100.50	\$370.06	\$70.44	\$54.23	\$1.90	\$69.00	\$42.50	\$81.32	\$13.86	\$80.38	\$275.12	\$1,159.31	\$2,007	173%	\$1,159	100%	-42%	
P13	Non conforming parking																												
	- In R and NCRO districts	52	282	52	50	6	30	30	33	0	535	\$118.78	\$496.94	\$70.44	\$54.23	\$1.90	\$69.00	\$42.50		\$13.86	\$86.76	\$335.92	\$1,290.33	\$388	30%	\$968	75%	149%	
	- in other districts	52	282	52	50	6	30	30	33	0	535	\$118.78	\$496.94	\$70.44	\$54.23	\$1.90	\$69.00	\$42.50		\$13.86	\$86.76	\$335.92	\$1,290.33	\$1,554	120%	\$1,290	100%	-17%	
P13a	Use permit to expand nonconforming residential uses	52	282	52	50	6	30	30	33	0	535	\$118.78	\$496.94	\$70.44	\$54.23	\$1.90	\$69.00	\$42.50		\$13.86	\$86.76	\$335.92	\$1,290.33	\$388	30%	\$968	75%	149%	
	<b>HOME OCCUPATION PERMITS</b>																												
P14	Home occupation in residential districts	1	1	0	0	21	0	0	0	0	23	\$2.28	\$1.76									\$1.07	\$17.48	\$29.26	\$107	366%	\$29	100%	-73%
	<b>DESIGN PERMITS</b>																												
P15a	Design permit for new construction: residential	51	333	52	50	6	30	30	33	0	585	\$116.49	\$586.81	\$70.44	\$54.23	\$1.90	\$69.00	\$42.50		\$13.86	\$95.52	\$373.92	\$1,424.67	\$2,284	160%	\$1,425	100%	-38%	
P15b	Design permit for new construction: non-residential or mixed use	110	610	52	50	6	30	30	66	0	954	\$251.26	\$1,074.94	\$70.44	\$54.23	\$1.90	\$69.00	\$42.50		\$27.72	\$159.20	\$629.28	\$2,380.46	\$2,850	120%	\$2,380	100%	-16%	
P16	Design permit for remodeling existing structures	49	300	52	50	6	30	30	33	0	550	\$111.92	\$528.66	\$70.44	\$54.23	\$1.90	\$69.00	\$42.50		\$13.86	\$89.25	\$347.32	\$1,329.08	\$1,145	86%	\$1,329	100%	16%	
P16a	Design permit extension	44	220	52	50	6	30	30	33	0	465	\$100.50	\$387.68	\$70.44	\$54.23	\$1.90	\$69.00	\$42.50		\$13.86	\$74.01	\$282.72	\$1,096.84	\$1,372	125%	\$1,097	100%	-20%	
	<b>VARIANCES</b>																												
P17	Variance to code provisions for new construction to all structures	27	232	52	50	6	30	30	33	0	460	\$61.67	\$408.83	\$70.44	\$54.23	\$1.90	\$69.00	\$42.50		\$13.86	\$72.24	\$278.92	\$1,073.59	\$1,373	128%	\$1,074	100%	-22%	
P18	Variance to code provisions for remodel of existing structures																												
	- Residential structures	27	232	52	50	6	30	30	33	0	460	\$61.67	\$408.83	\$70.44	\$54.23	\$1.90	\$69.00	\$42.50		\$13.86	\$72.24	\$278.92	\$1,073.59	\$343	32%	\$805	75%	135%	
	- Other structures	27	232	52	50	6	30	30	33	0	460	\$61.67	\$408.83	\$70.44	\$54.23	\$1.90	\$69.00	\$42.50		\$13.86	\$72.24	\$278.92	\$1,073.59	\$1,373	128%	\$1,074	100%	-22%	
	<b>SIGN PERMITS</b>																												
P19	Sign permits in all districts																												
	- With hearing	22	0	163	30	6	30	30	0	0	281	\$50.25		\$220.79	\$32.54	\$1.90	\$69.00	\$42.50			\$41.70	\$167.96	\$626.64	\$100	16%	\$470	75%	370%	
	- Without hearing	6	0	106	0	6	0	0	0	0	118	\$13.70		\$143.58		\$1.90					\$15.92	\$89.68	\$264.79	\$65	25%	\$199	75%	206%	
P20	Sign programs	45	220	52	50	6	30	30	33	0	466	\$102.79	\$387.68	\$70.44	\$54.23	\$1.90	\$69.00	\$42.50		\$13.86	\$74.24	\$283.48	\$1,100.12	\$100	9%	\$825	75%	725%	
	<b>PLANNED DEVELOPMENT PROGRAMS</b>																												
P21	Planned development permit																								hourly	100%	hourly	100%	0%
	<b>DEVELOPMENT AGREEMENTS</b>																												
P22	Development agreement																								hourly	100%	hourly	100%	0%
	<b>SPECIFIC PLANS</b>																												
P23	Specific plan																								hourly	100%	hourly	100%	0%
	<																												

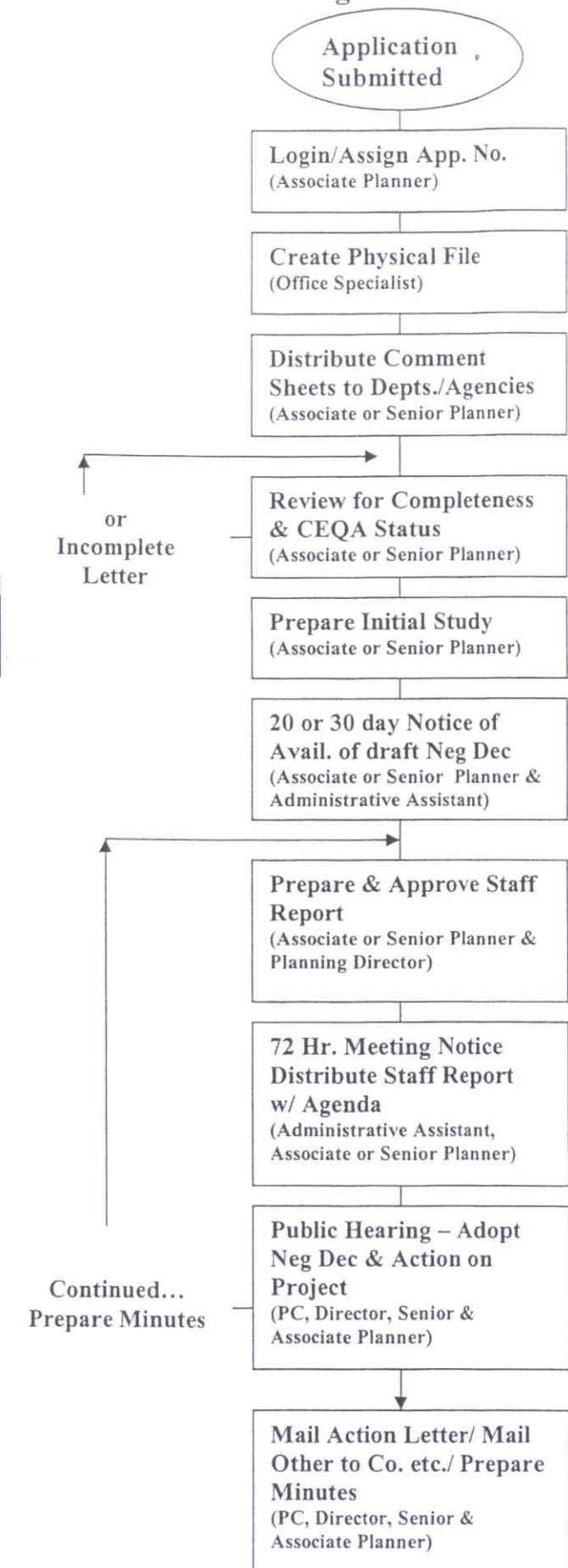
**PLANNING APPLICATIONS  
PROCESS FLOW CHARTS**



**Planning Commission  
Review w/out Initial Study**



**Planning Commission  
Review w/ Initial Study  
& Negative Declaration\***



\* EIR Process Not Shown

\*\* TCP: Telecommunications Permits are publicly noticed, but may be administratively acted upon without a hearing